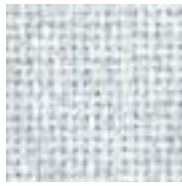
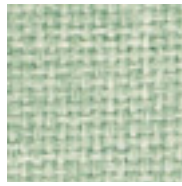


# Cara

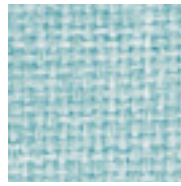
5  
year guarantee



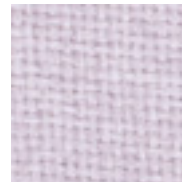
Glass EJ004



Argyll EJ167



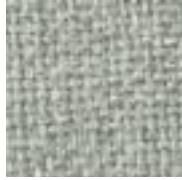
Skye EJ168



Clan EJ169



Fife EJ170



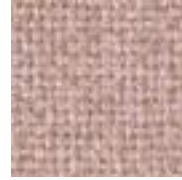
Spray EJ033



Arran EJ171



Dolphin EJ105



Charn EJ006



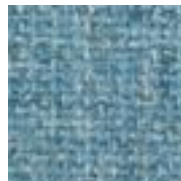
Sand EJ111



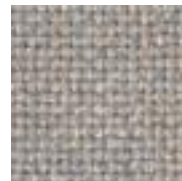
Opal EJ136



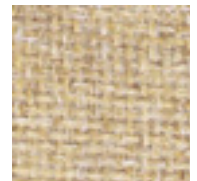
Ivy EJ106



Tay EJ010



Laggan EJ019



Austen EJ173



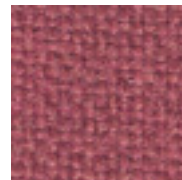
Chaucer EJ172



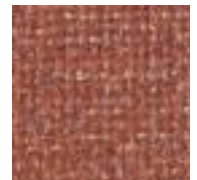
Elgin EJ042



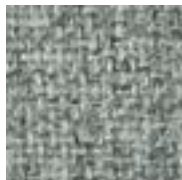
Mull EJ012



Lothian EJ176



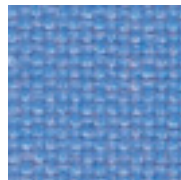
Highland EJ093



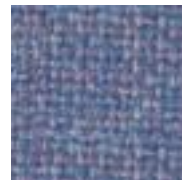
Portland EJ016



Hogmanay EJ174



Inverness EJ175



Iona EJ041



Pitlochry EJ076



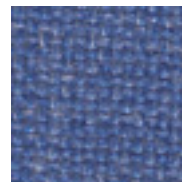
Lead EJ104



Carron EJ015



Galilee EJ125



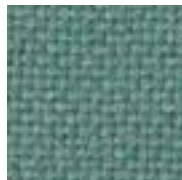
Angus EJ178



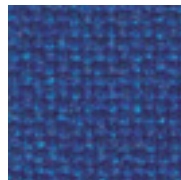
Tartan EJ177



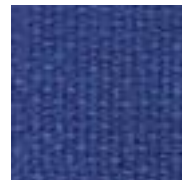
Merrick EJ048



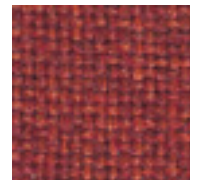
Etire EJ014



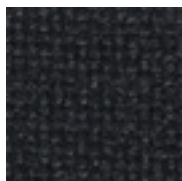
Cluanie EJ180



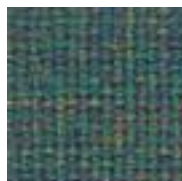
Adriatic EJ154



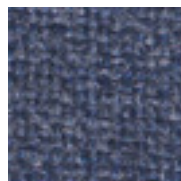
Scott EJ179



Black EJ138



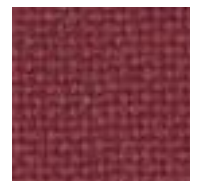
Persian EJ146



Miller EJ182



Walten EJ011



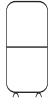
Tummel EJ038

[www.camirafabrics.com/samples](http://www.camirafabrics.com/samples)

To order samples, visit our on-line sample service.

# Cara

5  
year guarantee



## UK

**Composition**  
100% Polyolefin

**Weight**  
220g/m<sup>2</sup> ±5%  
(375g/lin.m. ±5%)

**Width**  
170cm ±2% Usable (Cara)

**\*Abrasion Resistance**  
Grade A tested in accordance with EN 14465:2003 with a 5 year guarantee of wearability (full details available)

**Flammability**  
BS 476 Part 7 Class 1  
BS EN 1021 - 1 : 2006 (cigarette)

*Note:* Flammability performance is dependent on components used.

**\*Light Fastness**  
6 (ISO 105 - B02:1999)

**\*Fastness to Rubbing**  
Wet: 4 Dry: 4  
(ISO 105 - X12:2002)

**Maintenance**  
Vacuum regularly. Alternatively, wipe clean with a damp cloth or shampoo using proprietary upholstery shampoo.

**Availability**  
Generally ex-stock

**Colour Matching**  
Batch to batch variations in shade may occur within commercial tolerances.

\*Tested in accordance with BS2543:1995/2004. Further information available on request.

Please note that ultimate seam performance is dependent on seam construction, and needle and thread type. We recommend that appropriate sewing advice be taken.

**Note:** We reserve the right to alter technical specifications without notice.

## D

**Zusammensetzung**  
100% Polyolefin

**Gewicht**  
220g/m<sup>2</sup> ±5%  
(375g/lfd.M. ±5%)

**Breite**  
170cm ±2% ohne Webkante

**\*Scheuerfestigkeit**  
Grad A getestet nach Norm EN14465:2003 mit einer 5 Jahresgarantie auf Haltbarkeit (Produktgarantie erhältlich)

**Feuersicherung**  
BS 476 Part 7 Class 1  
BS EN 1021 - 1 : 2006 (Zigarettestest)

*Bemerkung:* Schwerentflammbarkeit hängt von verwendetem Komponenten ab.

**\*Lichtechtheit**  
6 (ISO 105 - B02:1999)

**\*Reibecktheit**  
Nass: 4 Trocken: 4  
(ISO 105 - X12:2002)

**Reinigung**  
Regelmässig staubsaugen. Dazu mit einem feuchten Tuch abwischen, oder mit einem speziellen Polsterschaum behandeln

**Lieferzeit**  
Im allgemeinen ab Lager

**Farbabweichungen**  
Handelsübliche Farbabweichungen vorbehalten.

\*Wurde nach BS 2543:1995/2004 getestet. Weitere Informationen erhalten Sie auf Nachfrage.

Eine optimale Nahtausreissfestigkeit hängt von der Nahtfahne, der verwendeten Nadel und des Fadens ab. Wir empfehlen daher Nähversuche durchzuführen.

**Anmerkung:** Wir behalten uns die Änderungen technischer Spezifikationen vor.

## F

**Composition**  
100% Polyolefin

**Poids**  
220g/m<sup>2</sup> ±5%  
(375g/m.l. ±5%)

**Largeur**  
170cm ±2% utilisable (Cara)

**\*Résistance à l'abrasion**  
Grade A testé selon la norme EN 14465:2003 et soutenu par notre garantie de 5 ans (info disponible sur demande)

**Flammabilité**  
BS 476 Part 7 Class 1  
BS EN 1021 - 1 : 2006 (cigarette)

*Notez:* Réaction au feu dépend du composite utilisé.

**\*Solidité à la lumière**  
6 (ISO 105 - B02:1999)

**\*Solidité au frottement**  
Mouillé: 4 Sec: 4  
(ISO 105 - X12:2002)

**Nettoyage**  
Aspirer régulièrement. Essuyer avec une étoffe humide ou nettoyer à l'aide d'un produit approprié pour tissus d'ameublement.

**Disponibilité**  
Normalement en stock

**Standardisation des coloris**  
Variations de coloris d'un bain à un autre peuvent se manifester.

\*Testé selon la norme BS 2543:1995/2004. De plus amples informations sont disponibles sur demande.

Veillez noter que le glissage de la couture sous tension dépend de la structure de la couture, de l'aiguille et du fil. Nous recommandons de prendre conseil au près d'un professionnel.

**Veillez noter** que nous réservons le droit de modifier les spécifications techniques sans préavis.

## DK

**Materiale**  
100% Polyolefin

**Vægt**  
220g/m<sup>2</sup> ±5%  
(375g/lin.m. ±5%)

**Bredde**  
170cm ±2% anvendeligt(Cara)

**\*Slidstyrke**  
Grade A testet i henhold til EN 14465:2003 med en 5-års slidtagegaranti (detaljeret beskrivelse fås på forespørgsel)

**Flammesikring**  
BS 476 Part 7 Class 1  
BS EN 1021 - 1 : 2006 (cigarettest)

*Bemærk:* Flammesikkerheden er afhængig af anvendte komponenter.

**\*Lysægted**  
6 (ISO 105 - B02:1999)

**\*Gnidægted**  
Våd: 4 Tør: 4  
(ISO 105 - X12:2002)

**Rengøring**  
Støvsuges regelmæssigt. Alternativt rengøring med en hårdt opvredet klud eller skumrensning ved brug af en anerkendt møbelshampoo.

**Leveringstid**  
Normalt ab lager

**Farvedifferencer**  
Farvedifferencer indenfor kommercielle tolerancegrænser kan forekomme fra serie til serie.

\*Testet i henhold til BS2543:1995/2004. Yderligere information kan fås på forespørgsel.

Vær opmærksom på, at optimal sømglidning er afhængig af søm-, nål- og trådtype. Vi anbefaler, at du følger relevante syinstruktioner

**Bemærk:** Vi forbeholder os retten til at ændre tekniske specifikationer uden varsel

## ES

**Composición**  
100% Polyolefin

**Peso**  
220g/m<sup>2</sup> ±5%  
(375g/lin.m. ±5%)

**Ancho**  
170cm ±2% utilizable (Cara)

**\*Resistencia a la abrasión**  
Clasificación A según la norma EN 14465:2003 con garantía de 5 años de uso (más detalles disponibles)

**Inflamabilidad**  
BS 476 Part 7 Class 1  
BS EN 1021 - 1 : 2006 (cigarillo)

*Condiciones ignífugas dependientes del tipo de foam utilizado*

**\*Solidez a la luz**  
6 (ISO 105 - B02:1999)

**\*Solidez al rozamiento**  
Húmedo: 4 Seco: 4  
(ISO 105 - X12:2002)

**Mantenimiento**  
Limpiar con aspiradora frecuentemente. Bien lavar con un paño húmedo o con un champú apropiado para tapicería.

**Disponibilidad**  
Directamente de stock

**Igualdad de color**  
Cada lote puede tener pequeñas variaciones en el tono dentro de las tolerancias comercialmente aceptadas.

\*Pruebas realizadas según la norma BS 2543:1995/2004. Más información disponible bajo consulta.

El deslizamiento de costura depende de su construcción así como el tipo de aguja e hilo empleados. Se recomienda que pida consejos apropiados para la costura.

Se reserva el derecho de modificar las especificaciones técnicas sin previo aviso.

# camira

Camira Fabrics Ltd, Hopton Mills, Mirfield, West Yorkshire, UK, WF14 8HE

T +44 (0)1924 490591 Sales: UK (01924) 490491, Int. +44 1924 491666 F +44 (0)1924 495605 / 498930 e-mail: info@camirafabrics.com

UK Sales T 01924 490491 F 01924 498930  
International Sales T +44 1924 491666 F +44 1924 495605  
France/Benelux T +32 56 227 266 F +32 56 228 647  
Germany T +49 7031 60 84 30 F +49 7031 60 84 33  
Scandinavia T +45 32 55 20 01 F +45 32 52 55 45  
Hong Kong T +852 2314 8728 F +852 2314 4250  
Dubai T +971 4 3967398 F +971 4 3967398

www.camirafabrics.com



ISO 9001:FM 26548

INVESTOR IN PEOPLE

ISO 14001:FM 35118